



**An
Phríomh-Oifig
Staidrimh**

Central
Statistics
Office

Ireland's innovative approach to Monitoring the Sustainable Development Goals (SDG) Indicators and COVID-19 outbreak through geospatial visualisation

Dr. Kevin McCormack

Head of SDG Division – Central Statistics Office

Member of the UN's Inter Agency Expert Group on SDGs (IAEG-SDG)

Co-chair of the IAEG-SDG's Working Group on Geospatial Information (WGGI)

Co-chair of the WHO/UN Technical Advisory Group on COVID-19 Mortality Assessment

Role of CSO

Focal Point for SDGs

Coordinate requests for SDG data from UN Orgs
Data - GSBPM
Identification, Management, Presentation
SDG Road Map
VNR for SDGs
Data experts
Liaison with Gov. Depts-provide data for DECC

Governance

- 1 CSO, OSi, DECC, Esri Ireland**
Weekly
SDG Data Hub Government Initiatives
Data uploads SDG Champions
Story Maps Civil Society, Academia
- 2 Data Governance Board**
All Gov. Depts, Organisations
Quarterly
SDG Presentations
metadata, business glossaries,
lifecycle management
data quality, GSBPM
- 3 SDG Civil Service Senior Officials Group**
Annual
Official reports on progress toward SDGs
Policy aspects of individual Goals
Story Maps approved
VNR



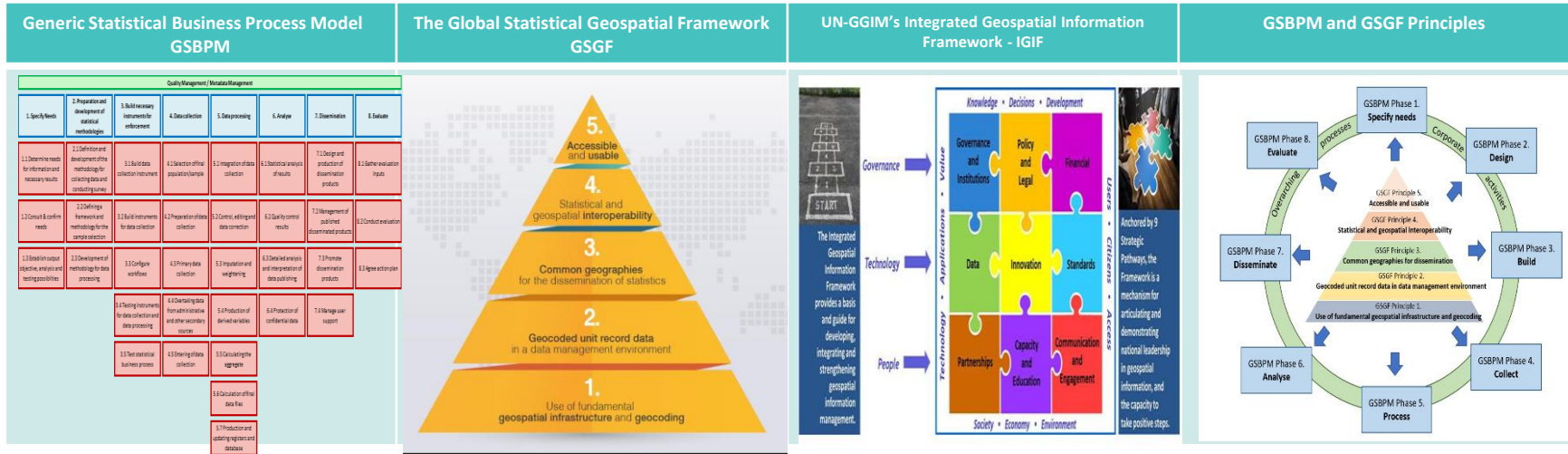
UNSD/Esri – FIS for SDGs Programme

The Irish Central Statistics Office (CSO), in collaboration with Ordnance Survey Ireland (OSi) and Esri Ireland, are currently participating in the **UNSD/Esri Federated Information System (FIS) for the Sustainable Development Programme**. This is an exemplar of both inter agency and public-private sector partnerships

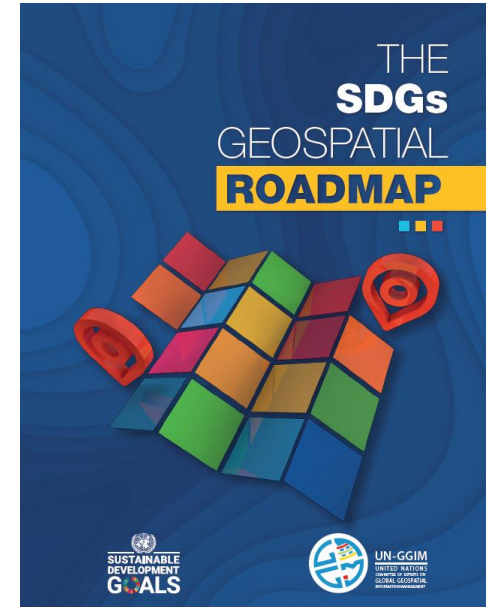
This programme commenced in May 2017 with a goal to develop and deploy a new approach for monitoring the UN SDGs using geographic information systems – “geospatial potential of statistical data.”



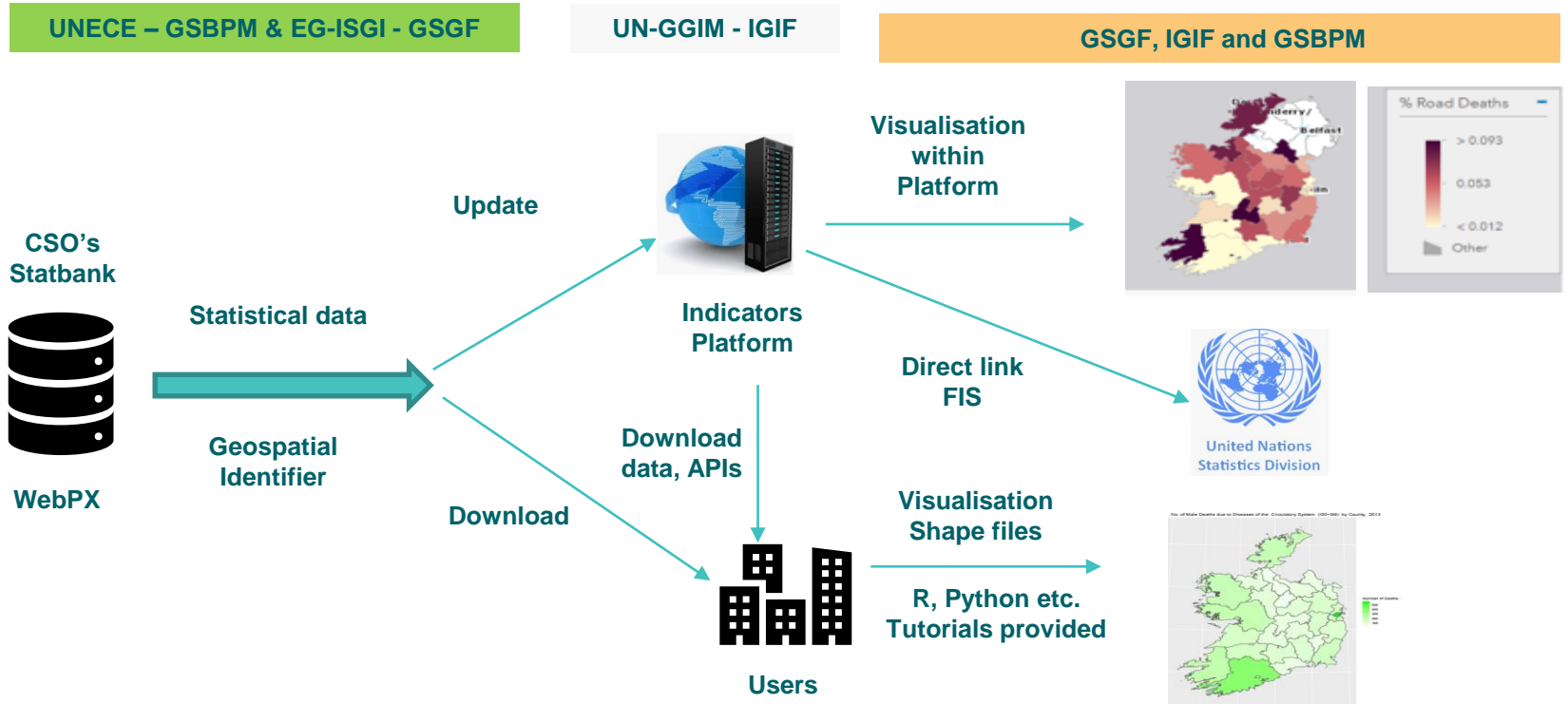
Foundations of Ireland's approach



Informed the development of the SDGs Geospatial Roadmap



Ireland's SDG reporting ecosystem



Ireland's SDG Data Hub

SDG Data Hub

<http://irelandsdg.geohive.ie/>

- Government Portal for all SDGs (UN, EU, National, OECD)
- Provide Data
- OSi – manages technical issues – uploads data
- DECC – responsibility for content

Geospatial visualisation

Story maps as a new communication channel

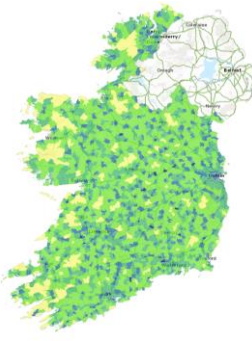


Welcome to Ireland's Sustainable Development Goals (SDGs) data hub.

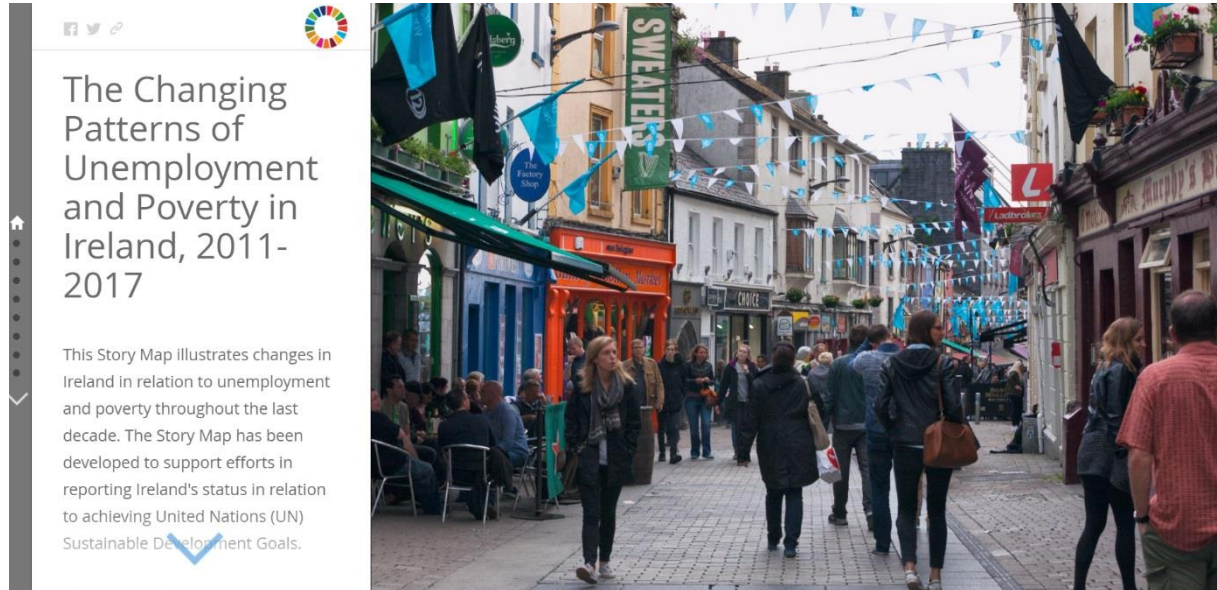
This is a collaboration platform for reporting on progress towards the goals and sharing information on related initiatives.

Ireland's progress against each goal is measured using a set of United Nations (UN) global and European Union (EU) agreed targets and indicators.

From this home page, you can access information on specific goals, view our video and sign up to receive updates.




Story Maps



The Changing Patterns of Unemployment and Poverty in Ireland, 2011-2017

This Story Map illustrates changes in Ireland in relation to unemployment and poverty throughout the last decade. The Story Map has been developed to support efforts in reporting Ireland's status in relation to achieving United Nations (UN) Sustainable Development Goals.




Story Maps

CSO

The Changing Patterns of Unemployment and Poverty in Ireland, 2011-2017

Census 2016 Unemployment Rate

In order to get an understanding of unemployment at a local scale, we have mapped unemployment rates at Electoral Division level (3409 Electoral Divisions) using Census 2016 Principal Economic Status (PES) data. While the QNHS reports all regions in Ireland as having an unemployment rate below 10% the PES data shows, in general, a higher unemployment level.



N Unemployed - Total, Census 2016

Number of Electoral Divisions with a 10% or Less Unemployment Rate

Census	Number of Electoral Divisions
Census, 2016	1559
Census, 2011	442

Click the green button below to view 2011 Unemployment Rates across Ireland

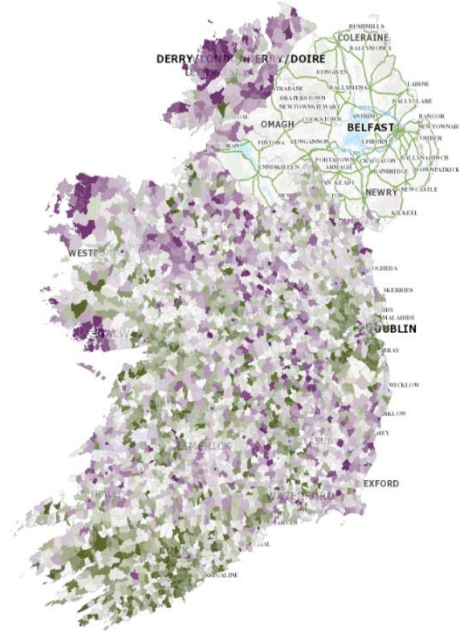
[Unemployment Rate, Census 2011](#)

The national map displays Census 2016 unemployment rates. High unemployment rates are concentrated in Donegal, the West, Midlands and South-East. The lower rates dominate the Dublin region and areas surrounding the five main cities (Cork, Galway, Dublin, Limerick & Waterford) reflecting the Urban-Rural divide in feeling the benefits of the recovery.

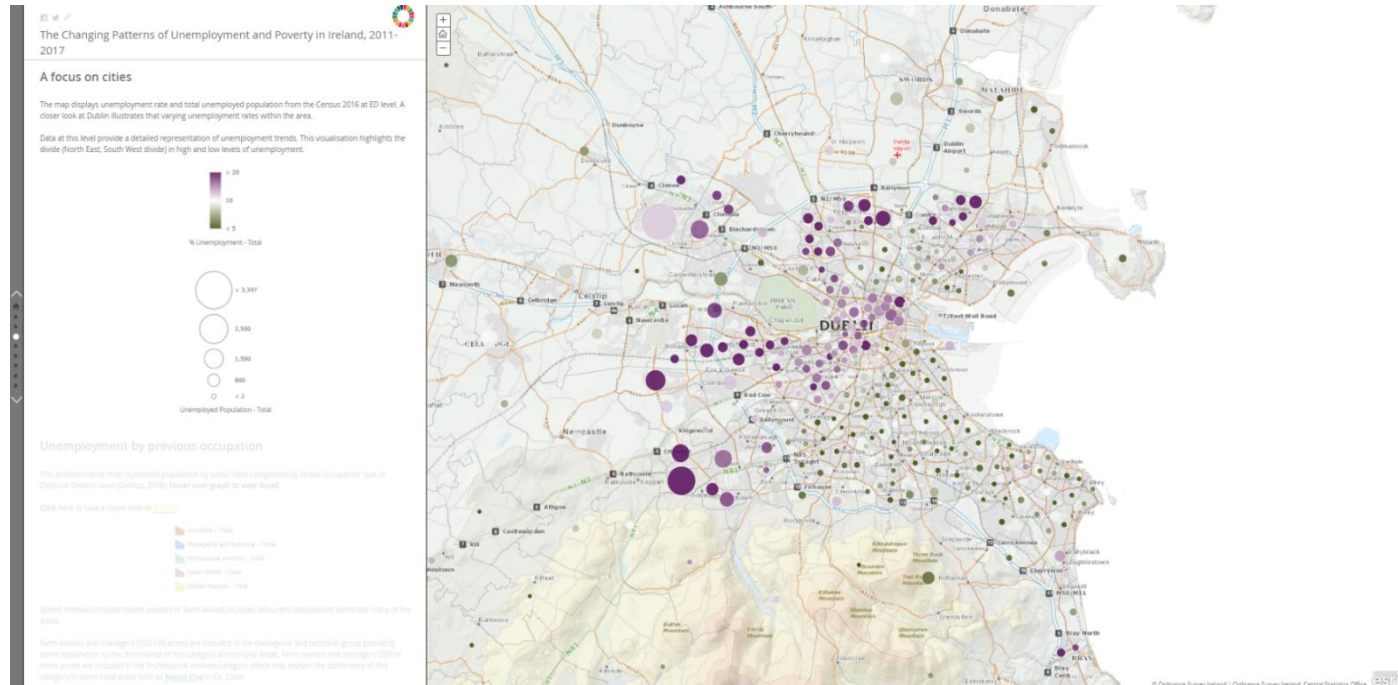
Zoom in to view detail on an area of interest.

A focus on cities

This map displays unemployment rates and total population at Electoral Division level. Population 2016, as of 2017, level 4



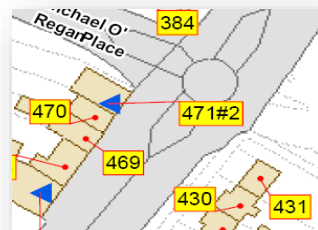
Story Maps



Network Analysis - Measuring Distance to Everyday Services - 2019

Census 2016 (Origin)

- 98% of dwellings linked to address database prior to census
- 2% digitised by census staff
- 2,070,256 dwellings on final census dataset



OSi's PRIME 2 (Road network)

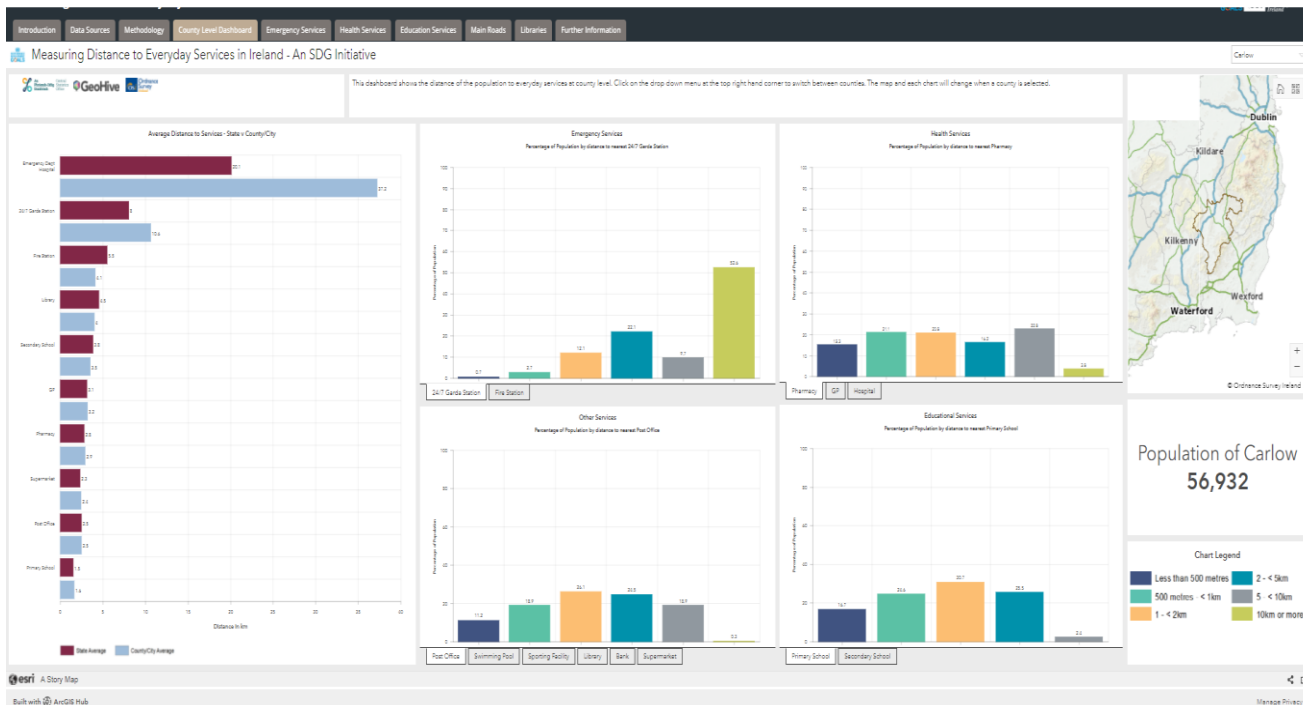
- Geographic Data Files level 2 (GDF2) from PRIME 2 database
- Over 300,000 segments
- Each segment is seamless and continuous, no broken lines or edges
- Generate network dataset using ArcGIS



Measuring Distance to Everyday Services - 2019



Home Goals Events Data Guidelines Stories & Applications



Self Registrations of SDG Organisations

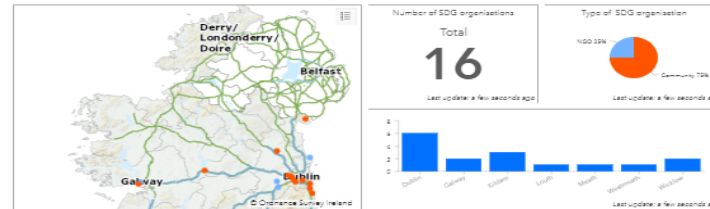
Self Registered SDG Organisations

SDG organisations across Ireland

Find SDG self registered organisations in your local area or an area of interest. Get involved in SDG organisations near you. Click on a map feature to access details.

Register your SDG organisation by completing a short survey.

[Go to Survey](#)



Open means Open

This site is a joint initiative between CSO and OSI and the data it presents are Open, Public and Free to Use.

Except where otherwise noted, content on this site is licensed under a Creative Commons Attribution 4.0 International license.

Project Documentation

[National Reporting and Dissemination Platforms](#)

[Principles and Guidelines of SDG Monitoring and Reporting Platforms](#)





**An
Phríomh-Oifig
Staidrimh**

Central
Statistics
Office

CSO

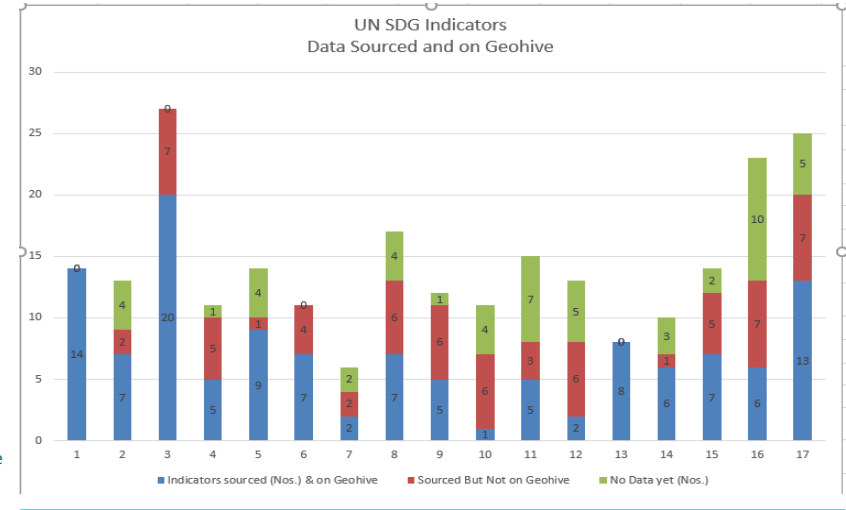
SDG - Hub



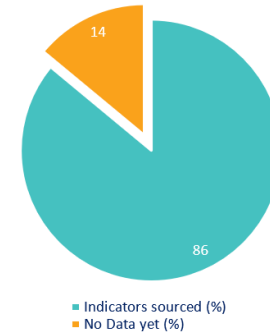
Dashboard – No. Indicators sourced

Goal	Total No. of SDG Indicators	Indicators sourced (Nos.)	No Data yet (Nos.)
Goal 1	14	14	0
Goal 2	13	10	3
Goal 3	27	27	0
Goal 4	11	10	1
Goal 5	14	13	1
Goal 6	11	11	0
Goal 7	6	5	1
Goal 8	17	16	1
Goal 9	12	11	1
Goal 10	11	8	3
Goal 11	15	10	5
Goal 12	13	11	2
Goal 13	8	8	0
Goal 14	10	8	2
Goal 15	14	14	0
Goal 16	23	14	9
Goal 17	25	21	4
Total	244	211	33

Status - 2019



SDG Indicators Sourced



Publications - UN SDG Goals

<https://www.cso.ie/en/statistics/unsustainabledevelopmentgoals/>

> Goals 1 to 10 – Publications
> Goals 11 to 17 ongoing



YOU ARE HERE: [HOME](#) / [STATISTICS](#) / UN SUSTAINABLE DEVELOPMENT GOALS

UN Sustainable Development Goals

Statistical Publications

- > UN SDG's Goal 1 - No Poverty
- > UN SDG's Goal 2 - Zero Hunger
- > UN SDG's Goal 3 - Good Health and Well-Being
- > UN SDG's Goal 4 - Quality Education
- > UN SDG's Goal 5 - Gender Equality
- > UN SDG's Goal 6 - Clean Water and Sanitation
- > UN SDG's Goal 7 - Affordable and Clean Energy
- > UN SDGs Goal 8 - Decent Work and Economic Growth -2021
- > UN SDGs Goal 9 - Industry Innovation and Infrastructure 2021
- > UN SDG's Goal 10 - Reduced Inequalities 2021

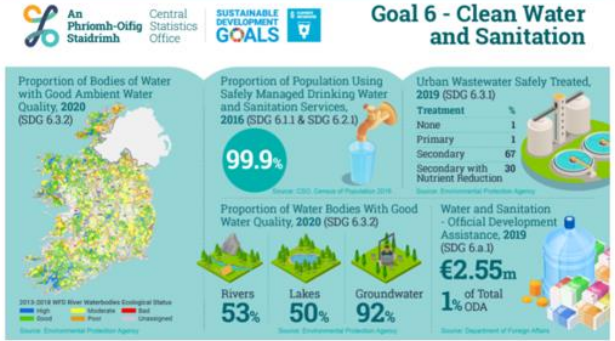
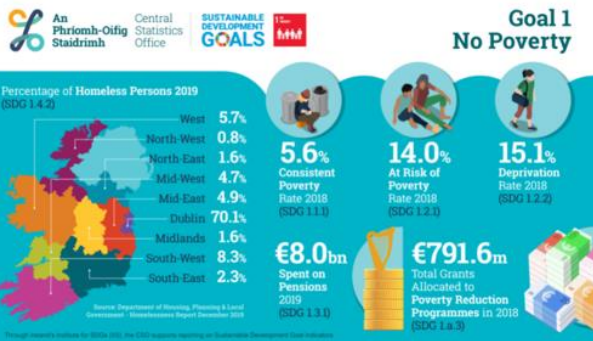
Related Content

- > A Profile of Ireland's Border Population 2016
- > Measuring Distance to Everyday Services in Ireland
- > Regional SDGs Ireland 2017
- > Mapping a Table of Data with Esri Shapefiles in R

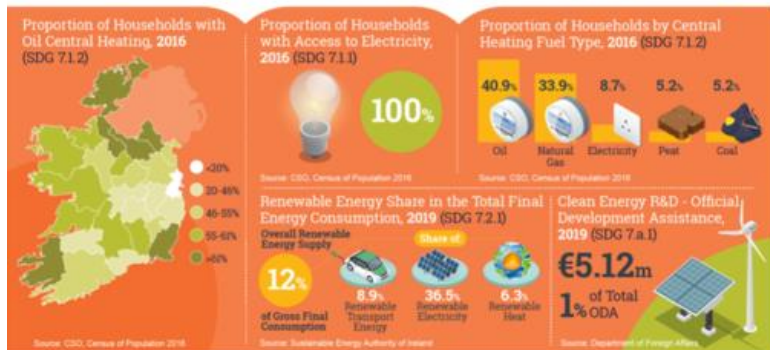
Related Links

- > Ireland's SDG Data Hub

SDG Publications – Goals 1 to 10 (Feb 2020 to Nov 2021)



Goal 7 - Affordable and Clean Energy



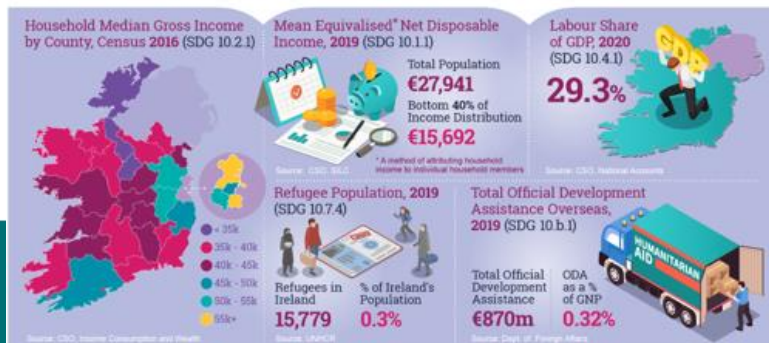
Goal 8 - Decent Work and Economic Growth



Goal 9 - Industry, Innovation and Infrastructure



Goal 10 - Reduced Inequalities





**An
Phríomh-Oifig
Staidrimh**

Central
Statistics
Office

Refocus of the Irish SDG team to COVID-19



Refocus of the Irish SDG team to COVID-19

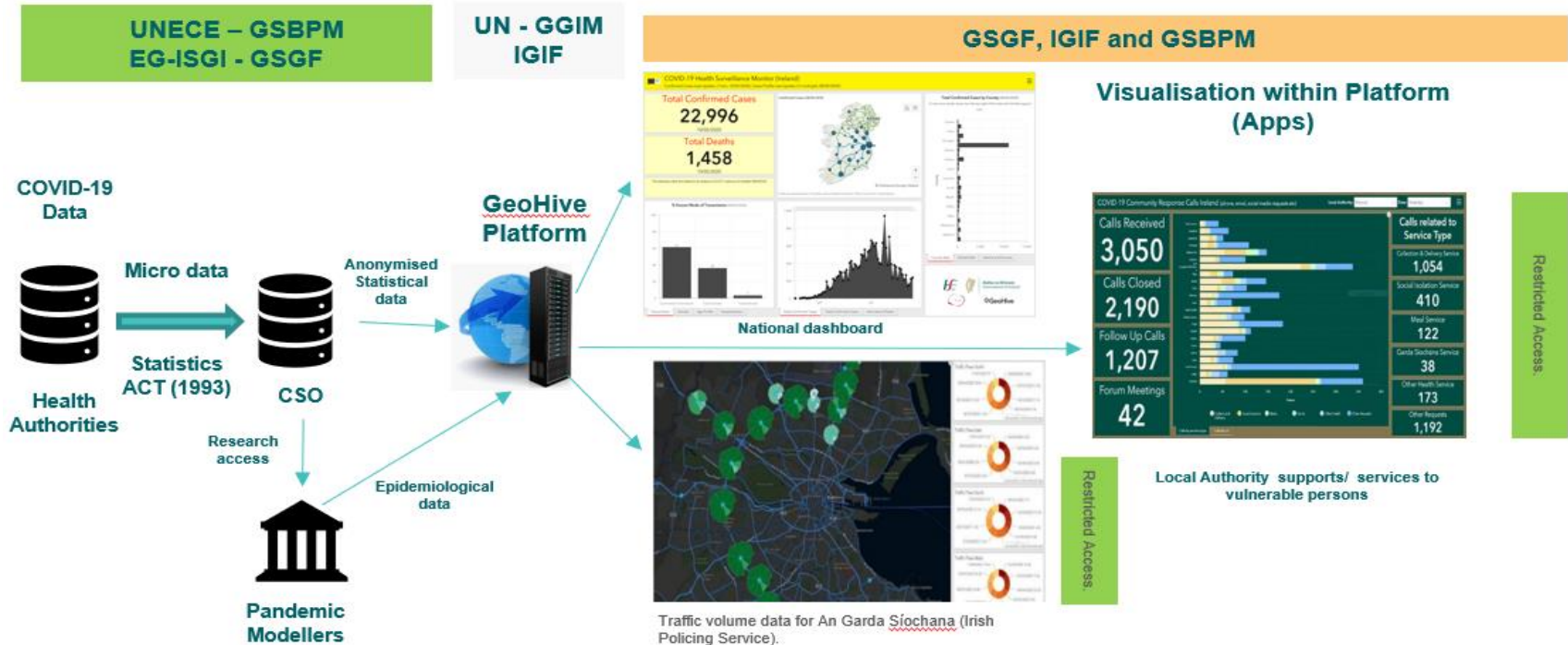
In response to the Coronavirus disease (COVID-19) outbreak, the Central Statistics Office (CSO) in collaboration with Ordnance Survey Ireland (OSI), the Department of Housing, Planning & Local Government (DHPLG) and the All Island Research Observatory (AIRO) in Maynooth University, along with Esri Ireland as technical partners, rapidly developed a National Covid-19 Data Hub on the GeoHive platform.

GeoHive was identified as the State's geospatial data platform in the Public Service Data Strategy 2019 – 2023.

For this particular action this work has been designated as the GeoHive Covid19 Response Coordination Group, (GH-COVID19-RCG).



Ireland's COVID-19 reporting ecosystem

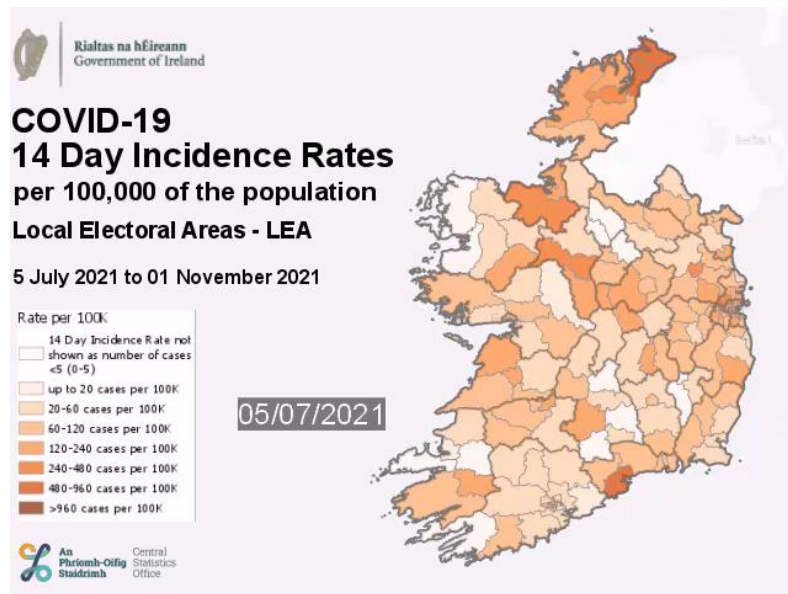


Ireland's COVID-19 Internal Hub

- You have seen an image of the public version of the National Covid-19 Data Hub. The National Covid-19 project partners use best practice methodologies and governance structures to ensure the appropriate overall management of the project and its data.
- There is an internal version of this National Covid-19 Data Hub that contains additional data, some of it sensitive. This internal site is only accessible in a secure manner by authorized individuals.
- Some examples of the data on this internal hub are:
 - Hospital admissions and discharges, by date, age and gender of patients.
 - ICU beds - occupied, by age, gender, dates of admission and discharge of patients, and this data is available for each hospital in Ireland.
 - Infections reported by geography (Census Electoral District (ED) 3,409 geographies), date, age, and gender.
 - Testing, dates of referral, test, lab results. Also the geography, ED, of the individuals tested.
 - Throughput of testing labs by date.
- The CSO has sourced these data from our Health Service Executive through our Statistics Act (1993).



Example of Continuing - Work Animation





An
Phríomh-Oifig
Staidrimh

Central
Statistics
Office

Thank You